

SpringSource Tool Suite 2.3.3.M1

- Installation Instructions -

Christian Dupuis 2.3.3 June 30, 2010

Updated for 2.3.3.M1

DISTRIBUTION INSTALLATION.....	3
Preparing the Installer on Windows XP, Vista and 7.....	3
Preparing the Installer on Mac OS X.....	3
Preparing the Installer on Linux.....	4
Running the STS Installer.....	5
UPDATE SITE INSTALLATION.....	6
Installing from the Release Update Site.....	6
Installing from the Nightly Snapshot Update Site.....	9
EXTENSION INSTALLATION.....	12
Installing Extensions from the STS Dashboard.....	12

DISTRIBUTION INSTALLATION

Preparing the Installer on Windows XP, Vista and 7

Download the STS executable installer (*.exe) from the STS download page. Once downloaded, please double-click the installer to launch the installation process.

Follow the on-screen instructions to finish the installation. See "Running the STS Installer".

If you downloaded the ZIP archive please do not use the extraction utility that comes with Windows as it has been reported that this is causing problems during extraction. Instead please use the free [7-Zip](#) utility.

Please make sure to download and install STS versions that match your JDK installation. See the following table for your reference:

STS download	Windows	JDK
springsource-tool-suite-2.3.3.M1-e3.5.2-win32-installer.exe or springsource-tool-suite-2.3.3.M1-e3.5.2-win32.zip	32-bit	32-bit
springsource-tool-suite-2.3.3.M1-e3.5.2-win32-installer.exe or springsource-tool-suite-2.3.3.M1-e3.5.2-win32.zip	64-bit	32-bit
springsource-tool-suite-2.3.3.M1-e3.5.2-win32-x86_64-installer.exe or springsource-tool-suite-2.3.3.M1-e3.5.2-win32-x86_64.zip	64-bit	64-bit

Preparing the Installer on Mac OS X

Download the STS Mac OS disk image (*.dmg) from the STS download page. Once downloaded, please mount the disk image by double-clicking on the downloaded dmg file. Open the volume named 'SpringSource' and double-click on the installer to launch the installation.

Follow the on-screen instructions to finish the installation. See "Running the STS Installer".

At this time we do not recommend to use any of the Cocoa builds for Mac OS. There are numerous open performance related problems with the Cocoa port reported at [Eclipse.org](#).

Preparing the Installer on Linux

Download the STS self-extracting shell script (*.sh) that matches your OS and machine architecture from the STS download page.

Please make sure to download and install STS versions that match your JDK installation. See the following table for your reference:

STS download	Linux	JDK
springsource-tool-suite-2.3.3.M1-e3.5.2-linux-gtk-installer.sh or springsource-tool-suite-2.3.3.M1-e3.5.2-linux-gtk.tar.gz	32-bit	32-bit
springsource-tool-suite-2.3.3.M1-e3.5.2-linux-gtk-x86_64-installer.sh or springsource-tool-suite-2.3.3.M1-e3.5.2-linux-gtk-x86_64.tar.gz	64-bit	64-bit

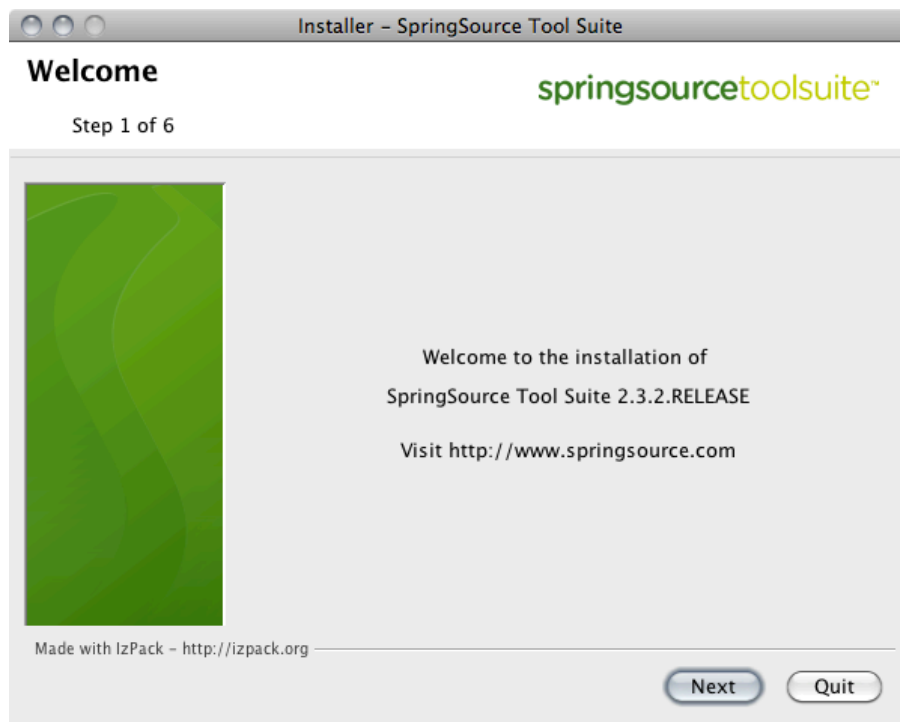
Once downloaded, launch the installation by running the following command in a terminal session:

```
$ sh springsource-tool-suite-2.3.3.M1-e3.5.2-linux-gtk-installer.sh

*****
*                               SpringSource Tool Suite 2.3.3.M1          *
*                               Installer                                  *
*****
preparing the installer...
... done
starting UI installer. please follow instructions on screen...
```

Follow the on-screen instructions to finish the installation. See "Running the STS Installer".

Running the STS Installer



Once the STS Installer is launched you can finish the installation by going through the following steps:

1. Click "Next" on Welcome page
2. Review and accept the license on the License Agreement page and click "Next"
3. Select the installation path on the Target Path page and click "Next"
(please don't install into C:\Program Files or other multi user directories on Linux or Mac as this will cause issues on updates and extension installs)
4. Select that components that you want to install and click "Next" on the Select Installation Packages
5. Select the path to your JDK installation (not on Mac OS X) and click "Next" on JDK Path page
(this will validate if the selected JDK matches the STS version to install)
6. On the Installation page let the installation proceed and wait until all files are installed; click "Next"
7. Create start menu shortcuts (on Windows only) and click "Next" on the Setup Shortcuts page
8. Click "Finish" to end the installation. Check "Launch SpringSource Tool Suite" to launch STS on exit.

UPDATE SITE INSTALLATION

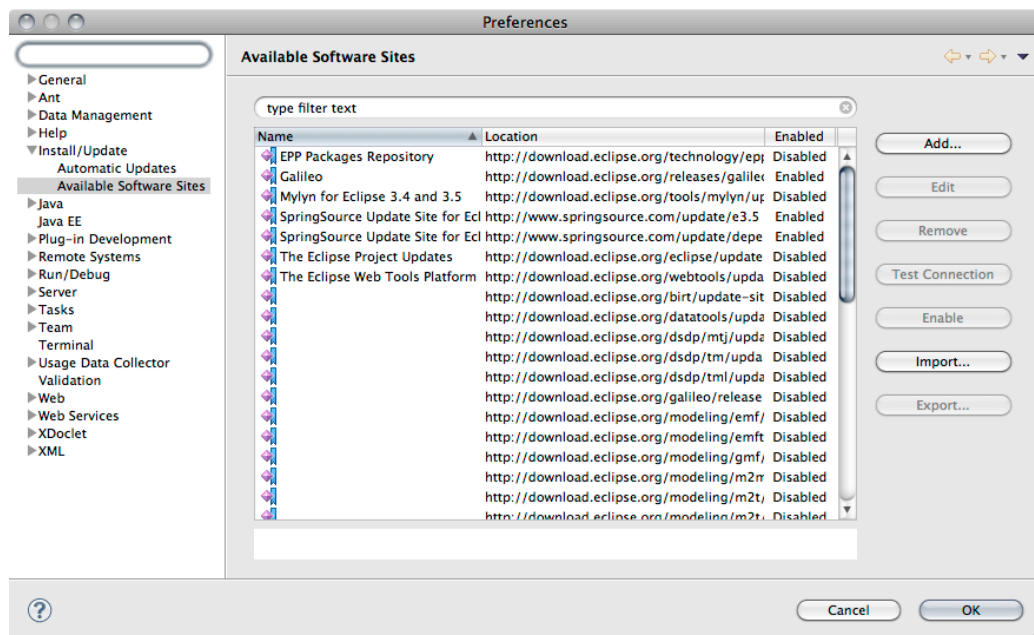
Installing from the Release Update Site

The SpringSource Tool Suite components and dependencies can be installed from an update site into 3.5-based Eclipse installations.

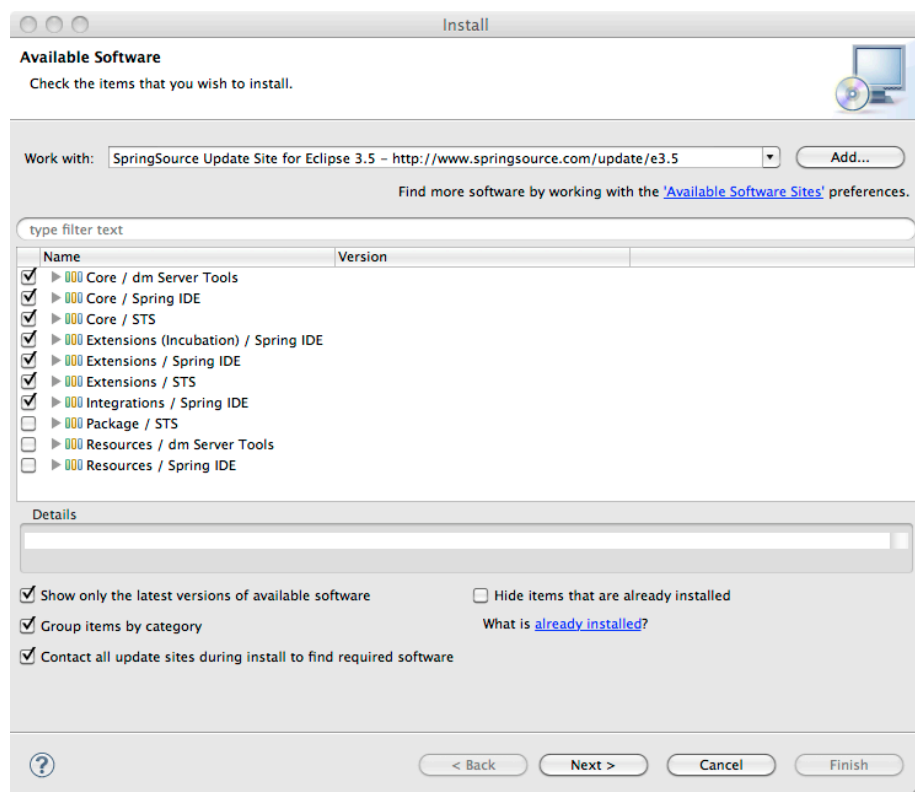
The following steps outline how to install the latest released version of STS:

1. The installation will only succeed if the following pre-requisites are fulfilled:
 - a. Eclipse 3.5
 - b. Eclipse WTP 3.1 or greater

It is easiest to start with a download of the “Eclipse IDE for JEE Developers” package available from <http://www.eclipse.org/downloads/>
2. Disable all update sites in the Eclipse Update Manager:
 - a. Open Preferences -> Install/Update -> Available Update Sites in Eclipse
 - b. Select all enabled update sites and disable all sites by clicking the “Disable” button on the right (once a disabled update site is selected the “Enable” button will change to “Disable”).
 - c. Click “OK” to close the preferences and save your changes.
3. Configure STS-related update sites:
 - a. Download the bookmarks file available from <http://dist.springsource.com/release/TOOLS/composite/e3.5/bookmarks.xml> and save it to your harddrive.
 - b. Open Preferences -> Install/Update -> Available Update Sites in Eclipse
 - c. Click the “Import...” button and select the downloaded bookmarks.xml. Click “Open” to finish the import.
 - d. The update site configuration should now look similar to the following screenshot:



- Verify that the dialog list the following update sites as enabled:
- Galileo
(<http://download.eclipse.org/releases/galileo>)
 - SpringSource Update Site for Eclipse 3.5
(<http://dist.springsource.com/release/TOOLS/update/e3.5>)
 - SpringSource Update Site for Eclipse 3.5 (Dependencies)
(<http://dist.springsource.com/release/TOOLS/composite/e3.5>)
- e. If those update sites are correctly listed close the preference pane by clicking "OK".
4. Install STS components from the update manager:
- a. Open the update manager from Help -> Install New Software ...
 - b. From the "Work with" drop-down select the update site with the name "SpringSource Update Site for Eclipse 3.5"
 - c. Select the components as shown in the following screenshot:



Make sure that all others settings remain as shown on the screenshot.

- Note: It is also possible to only install a subset of all available features.
- d. Click "Next >" to start the installation process.
 - e. Click "Next >" on the Install Details wizard page.
 - f. Select "I accept the terms of the license agreement" on the Review License wizard page and click "Finish".
 - g. This will now start the installation process and download all required components.

- h. Click "OK" on the Security Warning dialog.
 - i. Restart Eclipse when prompted in the Software Updates dialog to finish the installation.
5. Verify the installation:
- a. Open the about dialog from Help -> About Eclipse or Eclipse -> About Eclipse on Macs. The dialog should list the Spring IDE and SpringSource logo as shown in the following screenshot



- b. Open the "Spring" perspective from Window -> Open Perspective -> Other... -> Spring.

Installing from the Nightly Snapshot Update Site

The SpringSource Tool Suite can be installed and – if already installed – updated to nightly snapshots. Updating to nightly snapshots allows installing into Eclipse 3.5 and 3.6.

1. The installation will only succeed if the following pre-requisites are fulfilled:

- a. Eclipse 3.5 or Eclipse 3.6
- b. Eclipse WTP 3.1 or greater

It is easiest to start with a download of the “Eclipse IDE for JEE Developers” package available from <http://www.eclipse.org/downloads/>

2. Disable all update sites in the Eclipse Update Manager:

- a. Open Preferences -> Install/Update -> Available Update Sites in Eclipse
- b. Select all enabled update sites and disable all sites by clicking the “Disable” button on the right (once a disabled update site is selected the “Enable” button will change to “Disable”).
- c. Click “OK” to close the preferences and save your changes.

3. Configure STS-related update sites:

- a. Download one of the following bookmarks file suitable for your Eclipse version and save it to your harddrive:

- Eclipse 3.5: <http://dist.springsource.com/snapshot/TOOLS/composite/e3.5/bookmarks.xml>
- Eclipse 3.6: <http://dist.springsource.com/snapshot/TOOLS/composite/e3.6/bookmarks.xml>

- b. Open Preferences -> Install/Update -> Available Update Sites in Eclipse

- c. Click the “Import...” button and select the downloaded bookmarks.xml. Click “Open” to finish the import.

- d. Verify that the dialog list the following update sites as enabled.

Eclipse 3.5:

- Galileo
(<http://download.eclipse.org/releases/galileo>)
- SpringSource Update Site for Eclipse 3.5 (Snapshot)
(<http://dist.springsource.com/snapshot/TOOLS/update/e3.5>)
- SpringSource Update Site for Eclipse 3.5 (Snapshot, Dependencies)
(<http://dist.springsource.com/snapshot/TOOLS/composite/e3.5>)

Eclipse 3.6:

- Helios
(<http://download.eclipse.org/releases/helios>)
- SpringSource Update Site for Eclipse 3.6 (Snapshot)
(<http://dist.springsource.com/snapshot/TOOLS/update/e3.6>)
- SpringSource Update Site for Eclipse 3.6 (Snapshot, Dependencies)
(<http://dist.springsource.com/snapshot/TOOLS/composite/e3.6>)

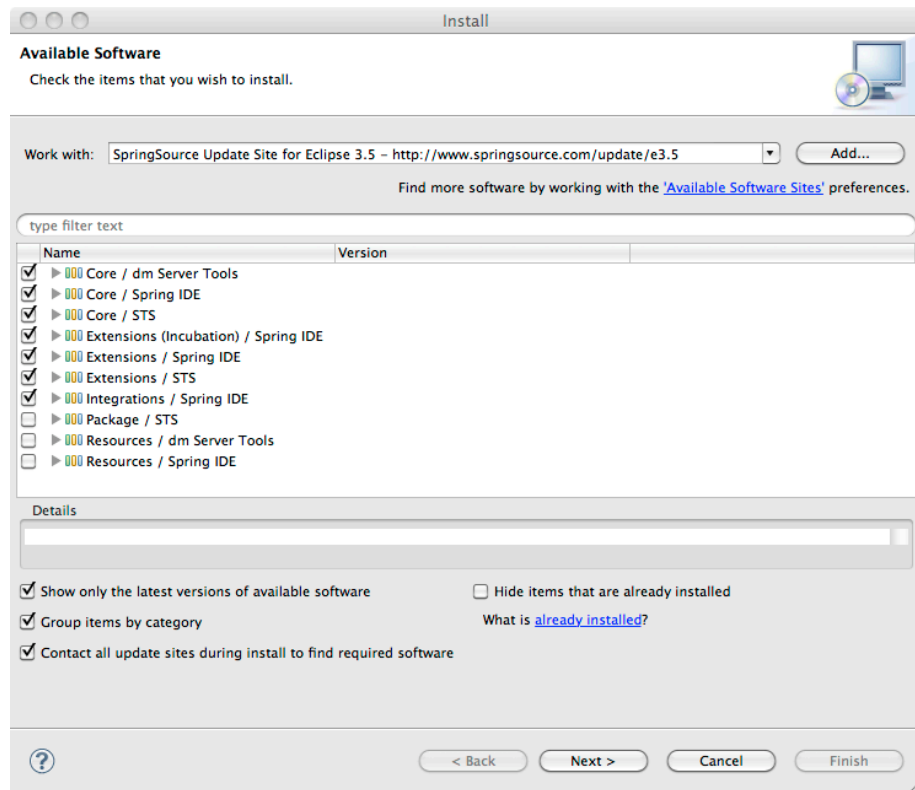
- e. If those update sites are correctly listed close the preference pane by clicking “OK”.

4. Install STS components from the update manager:

- a. Open the update manager from Help -> Install New Software ...

- b. From the “Work with” drop-down select the update site with the name “SpringSource Update Site for Eclipse 3.5” or “SpringSource Update Site for Eclipse 3.6” depending on your Eclipse version

- c. Select the components as shown in the following screenshot:



Make sure that all others settings remain as shown on the screenshot.

Note: It is also possible to only install a subset of all available features.

- d. Click "Next >" to start the installation process.
 - e. Click "Next >" on the Install Details wizard page.
 - f. Select "I accept the terms of the license agreement" on the Review License wizard page and click "Finish".
 - g. This will now start the installation process and download all required components.
 - h. Click "OK" on the Security Warning dialog.
 - i. Restart Eclipse when prompted in the Software Updates dialog to finish the installation.
5. Verify the installation:
- a. Open the about dialog from Help -> About Eclipse or Eclipse -> About Eclipse on Macs. The dialog should list the Spring IDE and SpringSource logo as shown in the following screenshot



- b. Open the "Spring" perspective from Window -> Open Perspective -> Other... -> Spring.

EXTENSION INSTALLATION

Installing Extensions from the STS Dashboard

STS provides access to a variety of SpringSource and third-party plugins. To access the STS Extension Install open the STS Dashboard from Help -> Dashboard. Once the Dashboard is loaded, click on the Extension tab.

On the Extension tab select the plugins that you want to install and click "Install" in the lower right corner of the tab.

